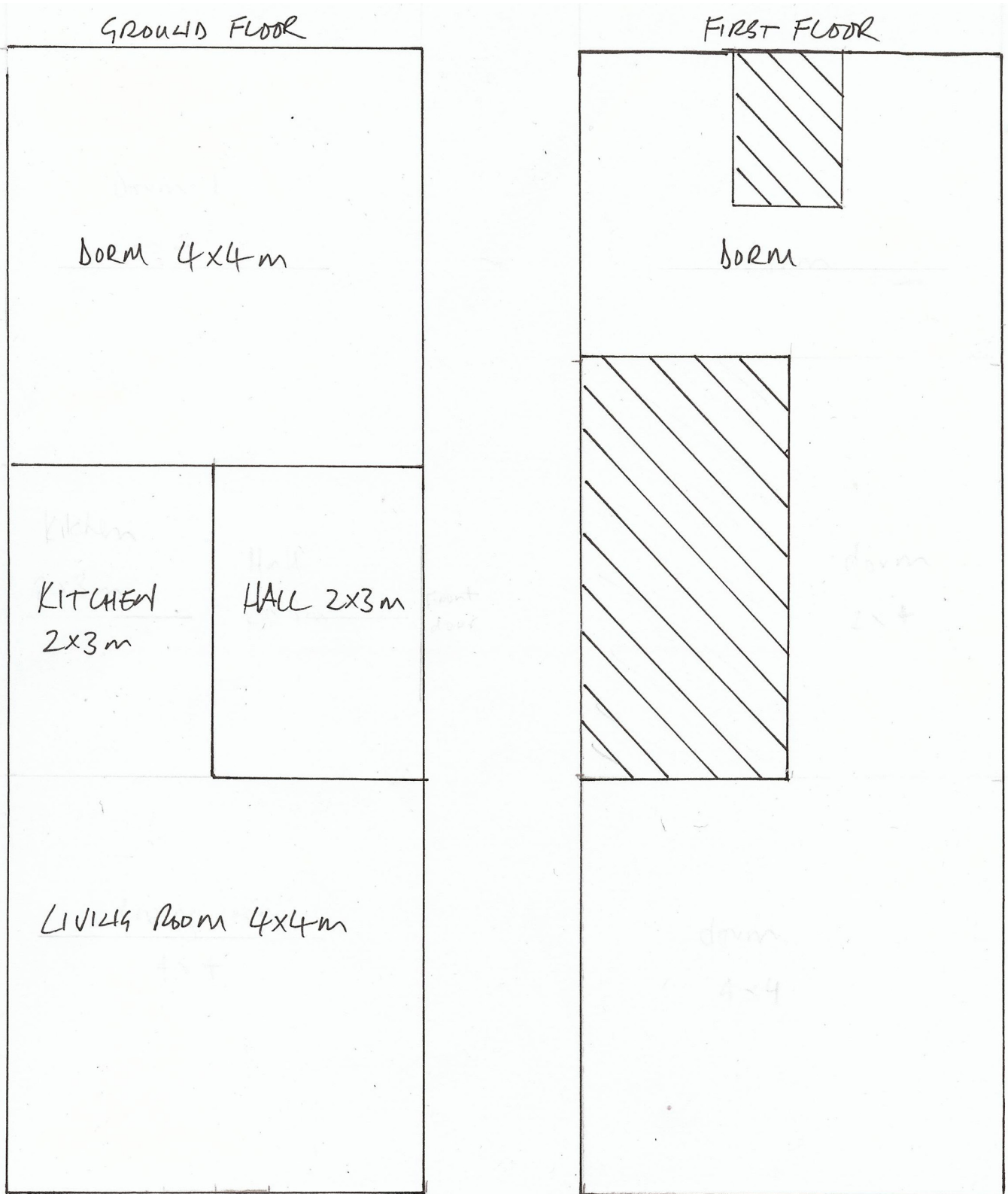


Acheninver Hostel

Appendix I - Floorplan and maps



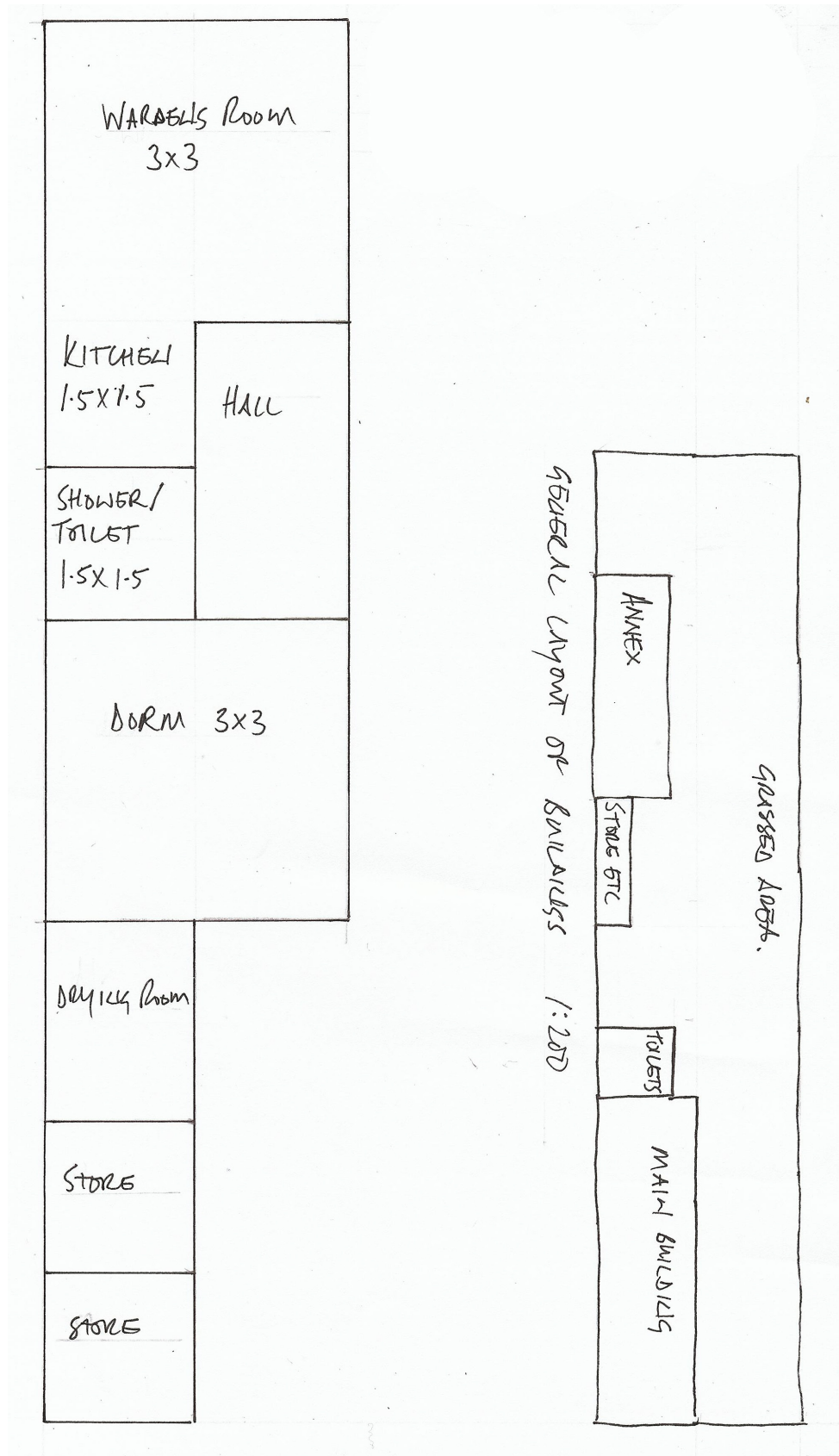
Main Building



Acheninver Hostel

Appendix - Floorplan and maps

Annex



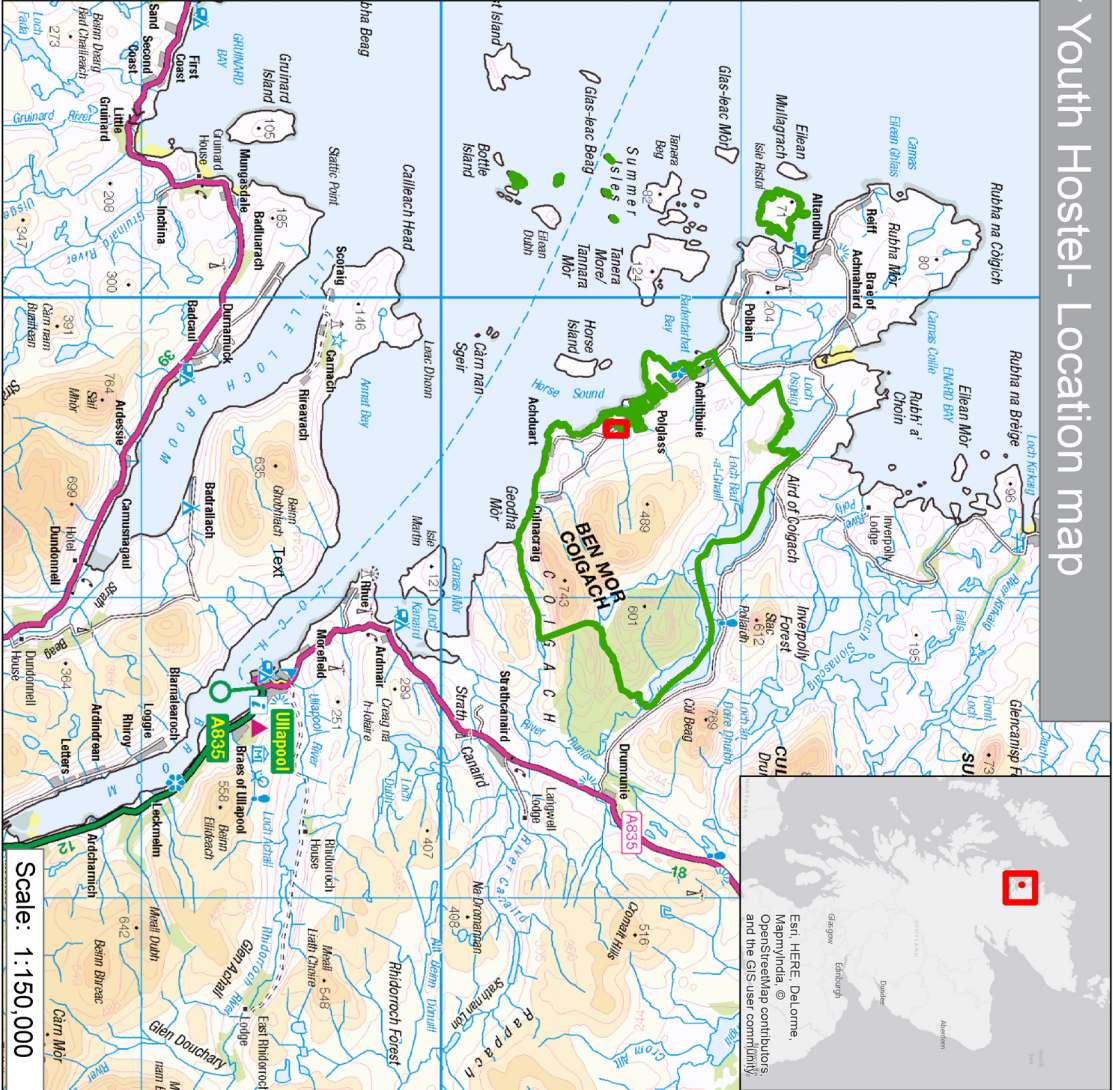
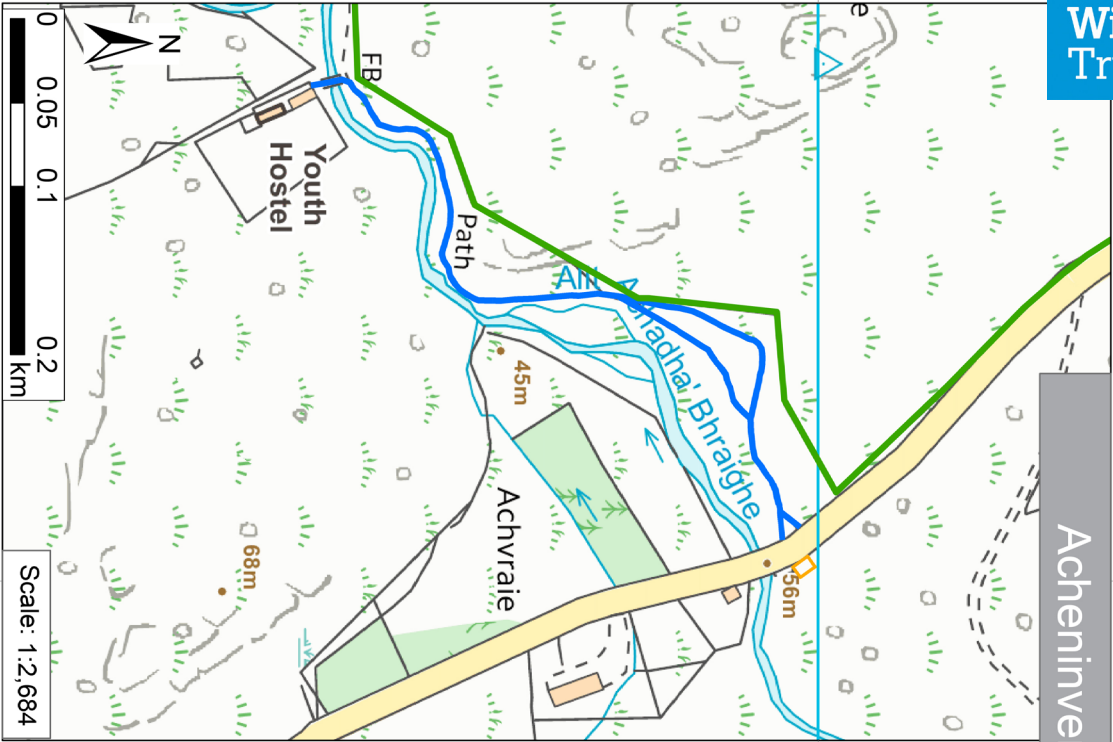
Acheninver Hostel

Appendix - Floorplan and maps



Scottish Wildlife Trust

Acheninver Youth Hostel- Location map



Scottish Wildlife Trust
 HQ Harbourside House
 110 Commercial Street
 Edinburgh
 EH6 6NF

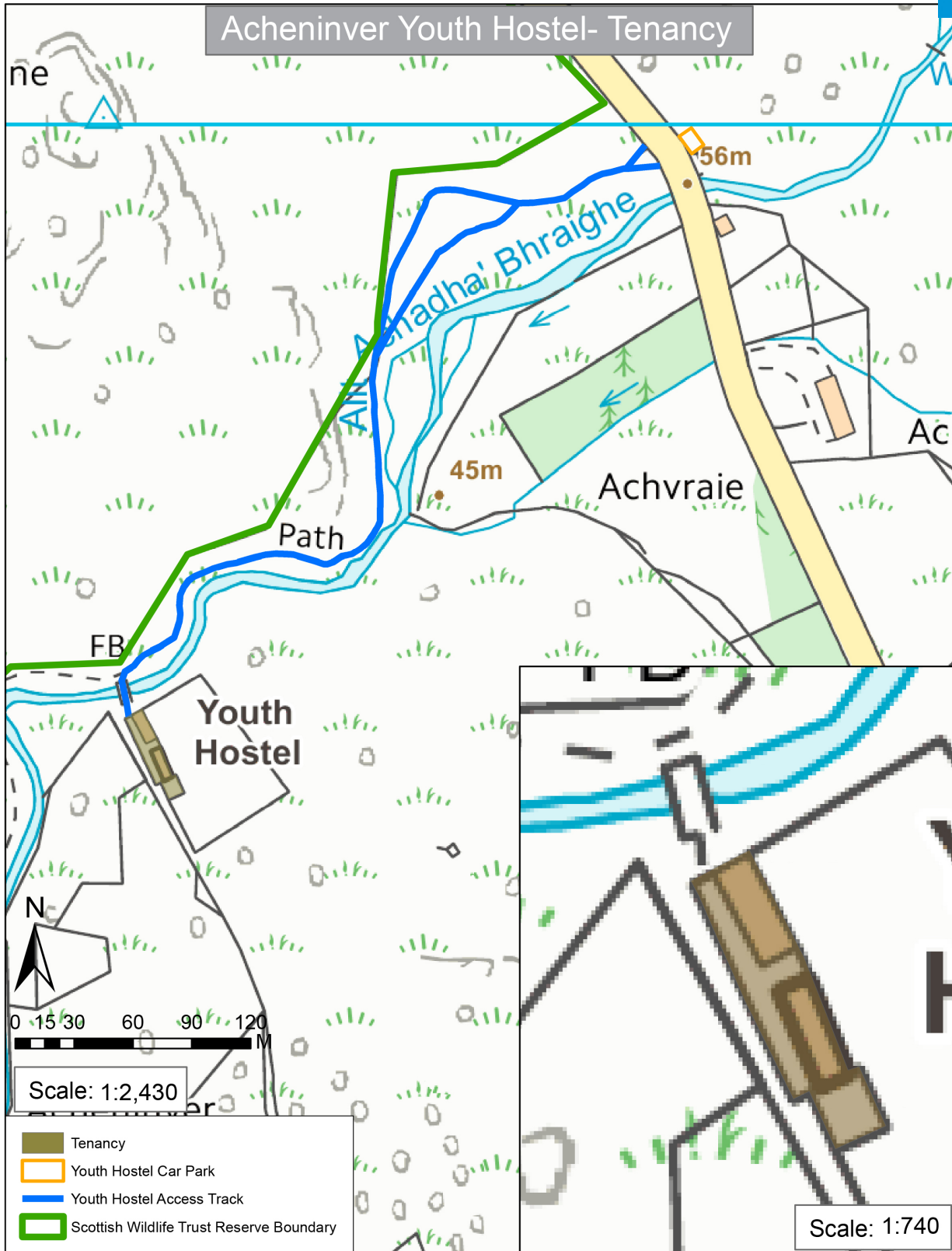
© Crown copyright and database rights 2015.
 Ordnance Survey licence number 100030835.
 Central Grid Reference: NC075065
 Reserve Manager: Mark Foxwell
 Region: Highlands

- Scottish Wildlife Trust Reserve Boundary
- Tenancy
- Youth Hostel Car Park
- Youth Hostel Access Track



Acheninver Hostel

Appendix - Floorplan and maps



Scottish Wildlife Trust
HQ Harbourside House
110 Commercial Street
Edinburgh
EH6 6NF

© Crown copyright and database rights 2015.
Ordnance Survey licence number 100030835.
Central Grid Reference: NC075065
Reserve Manager: Mark Foxwell
Region: Highlands

